



卫生健康方面防范生物恐怖袭击
以天花为例

**Preparing for Bioterrorist Attacks
Example: Smallpox**

Detlef Cwojdzinski

柏林卫生社会消费者保护部

Senate Department for Health, Social Services and Consumer Protection

计划基础

Plans are based on:

- 罗勃特-科赫-研究所的多层计划
 - 由联邦、州、专业机构协调制定
- **Multi-phase plan of the Robert Koch Institute**
 - **Coordinated with the federal government, state governments, and professional associations**
- **4个难点 / Four priorities**
 - **诊断 / Diagnosis**
 - **治疗 / Treatment**
 - **传染病卫生措施**
Epidemic control measures
 - **免疫机构**
Organizing vaccination



免疫站的后勤保障

Logistics for vaccination centers

人源分配计划

Human resources planning

培训及再培训

Training and continuing education

容量计算

Calculating capacity



- 任务:
5天内对柏林人口进行免疫接种
- 500 人每天每个免疫点
- 10 个免疫点一个免疫站
- 5000 人每天每个免疫站
- 5 天
- **25.000 每个免疫站 x 135 免疫站 = 3.375.000 人**



- Task:
Vaccinating Berlin's population within five days
- 500 people a day at each vaccination station
- 10 vaccination stations per vaccination center
- 5000 people a day at each center
- 5 days
- **25,000 per center x 135 centers = 3,375,000 people**



计划数据调查

Obtaining planning data



■ 演习

■ Practice drill

计划数据调查

Obtaining planning data

- 检查免疫站工作流程的设计方案
 - 组织结构
 - 人员配置
 - 材料物资
- 调查检验固定的工作流程
- **Assessing plans for the operation of a vaccination center**
 - **Organization**
 - **Staffing**
 - **Supplies**
- **Determining und assessing**



免疫站人员需求

Staff needed at the vaccination center

1	Waiting room	1	排队等待
2	Entrance - Information	2	入口 - 信息口
3	Triage 1	3	分科 1
4	Waiting area	4	排队等待
5	Triage 2	5	分科2
6	Vaccine preparation	6	免疫准备
7	Vaccination	7	免疫接种
8	Supply storage	8	药剂室
10	Management of the center	10	免疫站领导
11	Child care	11	婴儿护理
12	Sick people	12	生病
13	Isolation	13	隔离
14	First-aid station	14	急症室
15	Disposal	15	AP 清除处理
16	Staff rooms Break rooms	16	人员休息室

90-100
工作人员

90-100
staff
members

免疫站布置期

Setting up a vaccination center

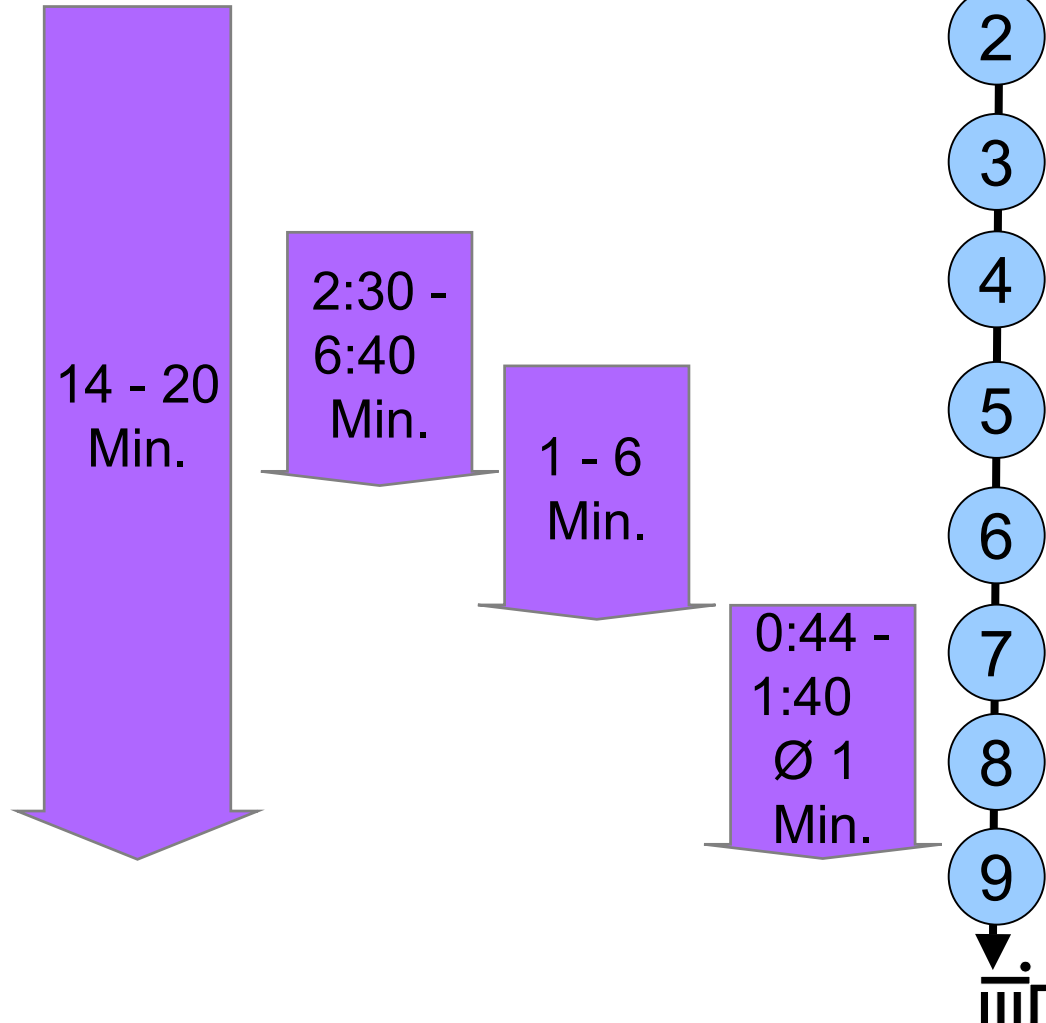
Time		x + 2 h	x + 4 h	x + 6 h	x + 8 h
发病 警报 Alarm is activated Alerting the public					
免疫站准备 Equipping the vaccination center					
对工作人员发布指令 Instructions given to staff members					

时间和数量配置

Overview of time and quantity

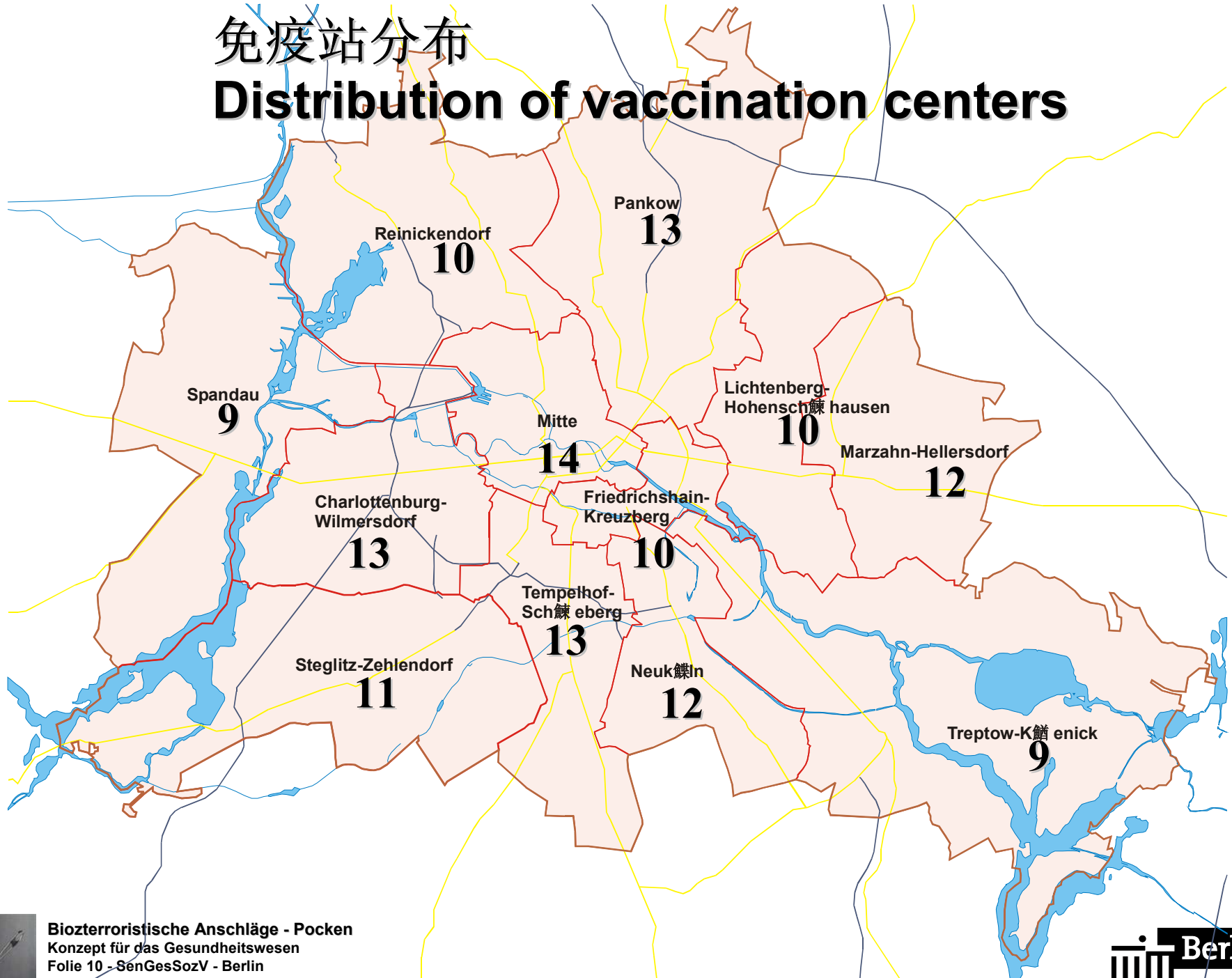


一小时内约400受免疫人
approx. 400 people/hour vaccinated



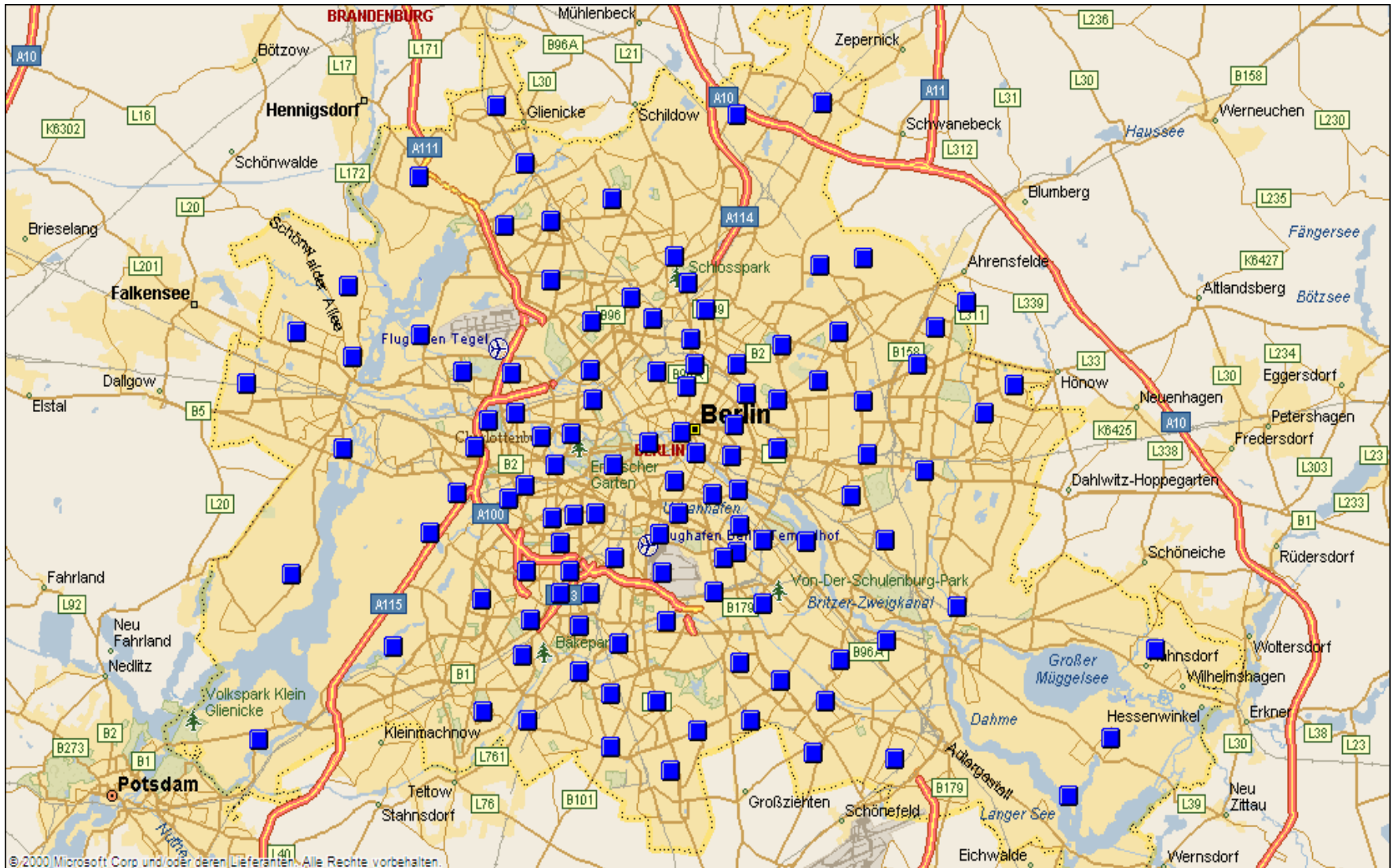
免疫站分布

Distribution of vaccination centers



免疫站状况

Location of the vaccination centers



© 2000 Microsoft Corp und/oder deren Lieferanten. Alle Rechte vorbehalten.

免疫站后勤

Vaccine logistics



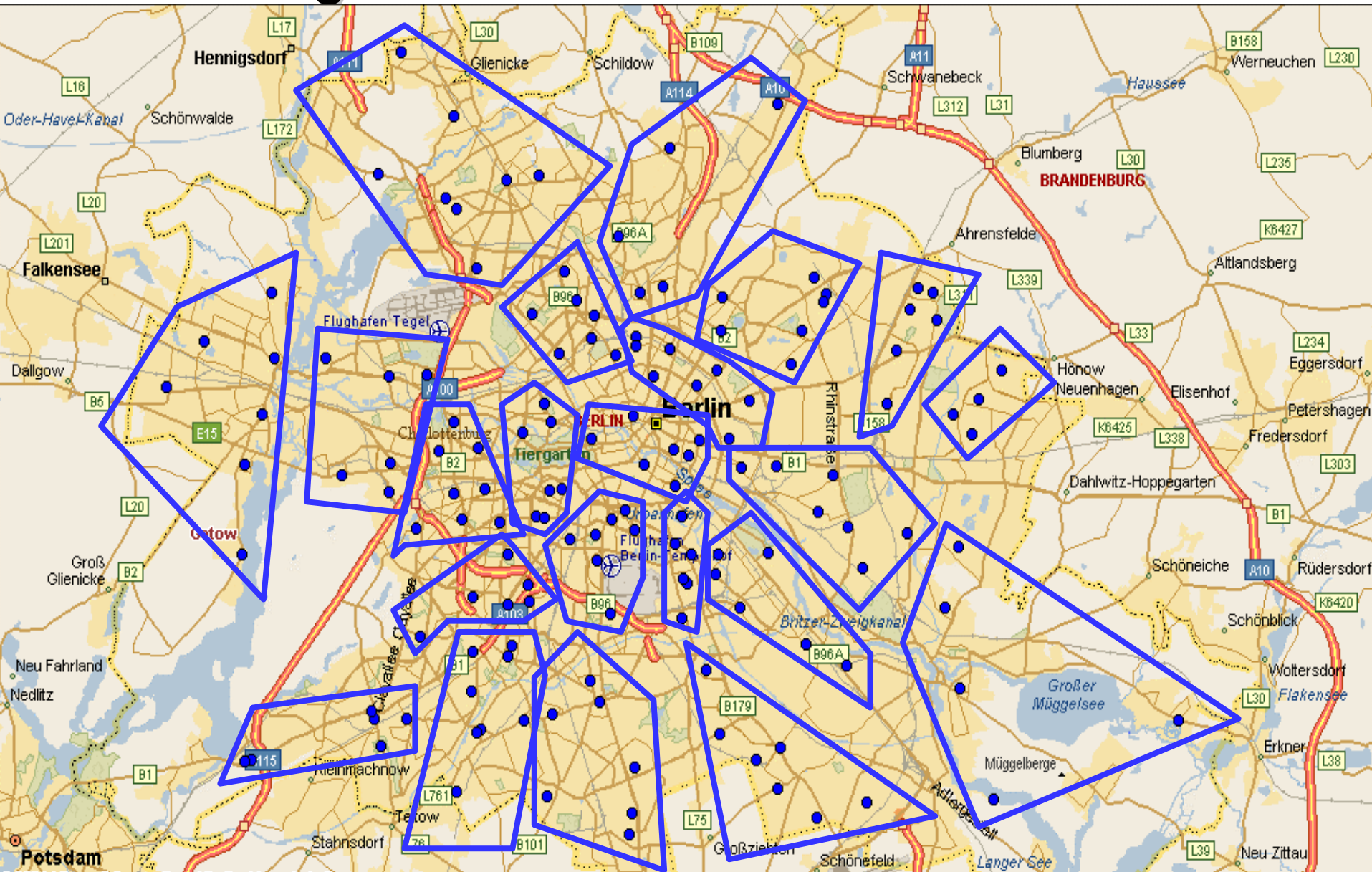
免疫站材料设备

Supplies for vaccination centers



后勤任务

Logistics



禁忌症咨询

Counseling on contraindications

- 大面积免疫由柏林**135**家免疫站完成
- **Mass immunization of the population takes place in Berlin's 135 vaccination centers**
- 禁忌症咨询由资格医生进行
- **Physicians in private practice counsel patients on contraindications**
- 对特别重症状由区咨询中心进行
- **Borough counseling centers advise physicians in difficult individual cases**

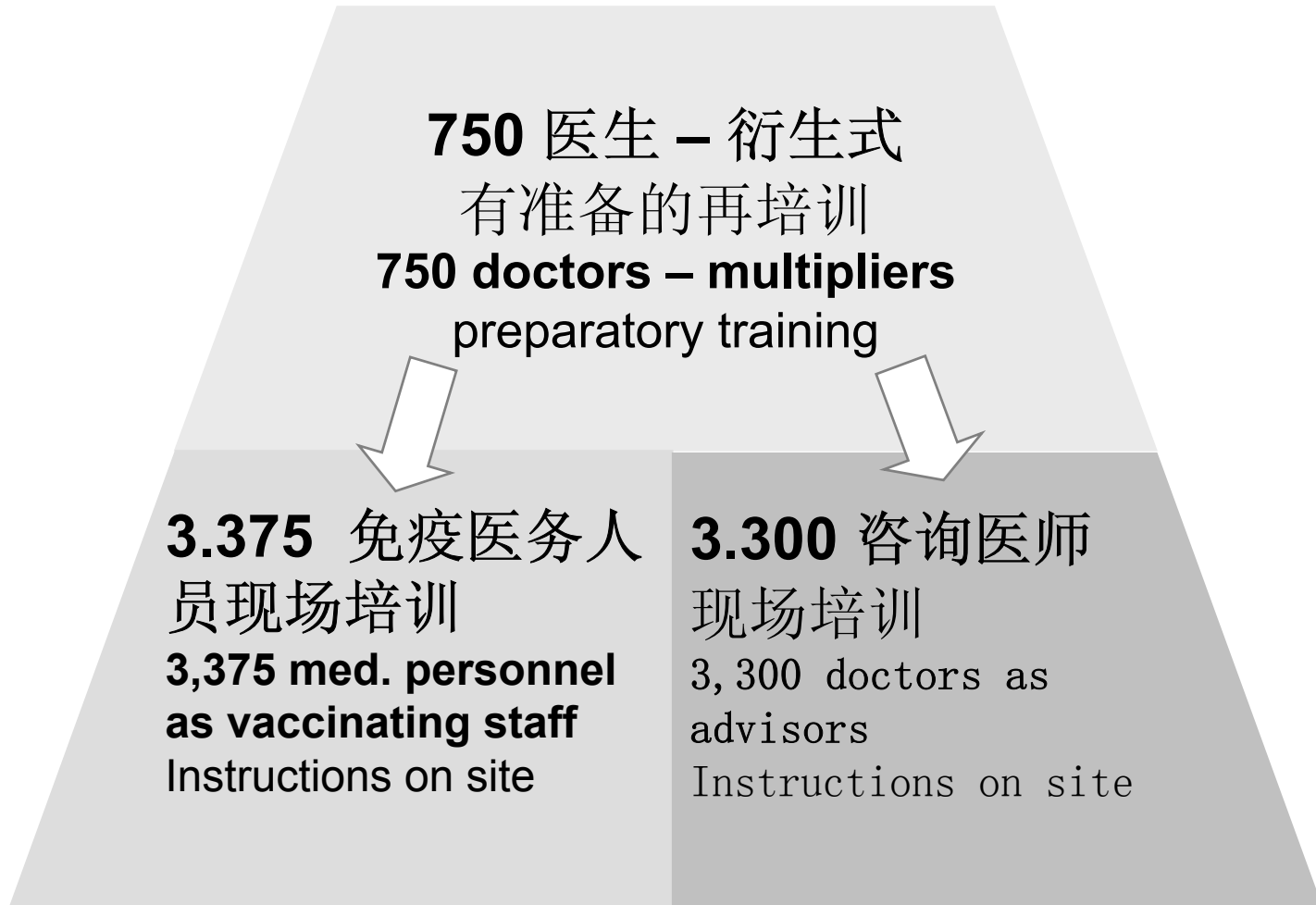
人员招募

Recruiting personnel

- 卫生部门 / **Public health agencies**
- 医院 / **Hospitals**
- 资格医生 / **Physicians in private practice**
- 企业医务机构 / **Corporate medical services**
- 学生 / **Students**
- 退休人员 / **Retirees**

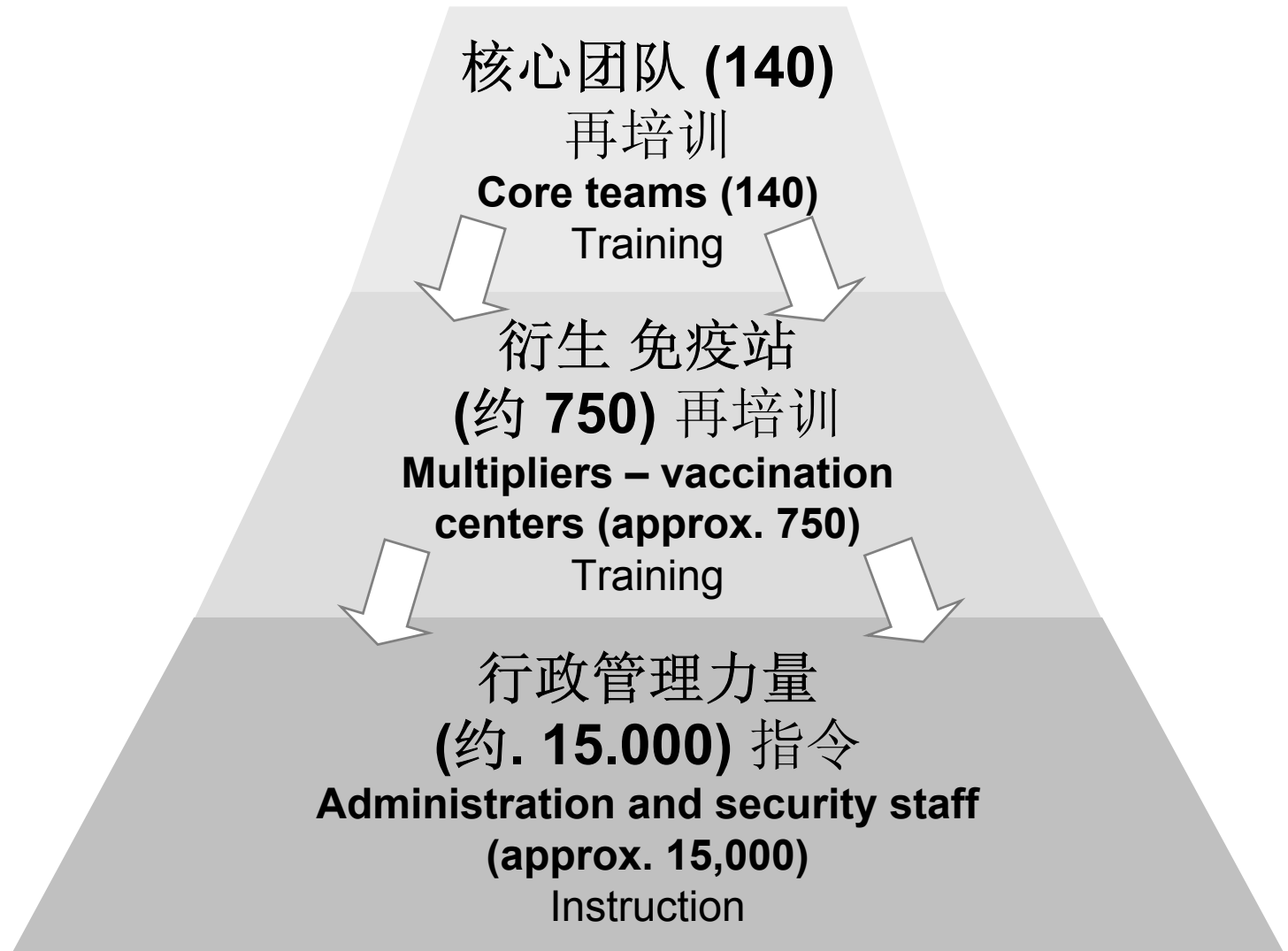
免疫 – 人员和再培训

Vaccination – Staff and training

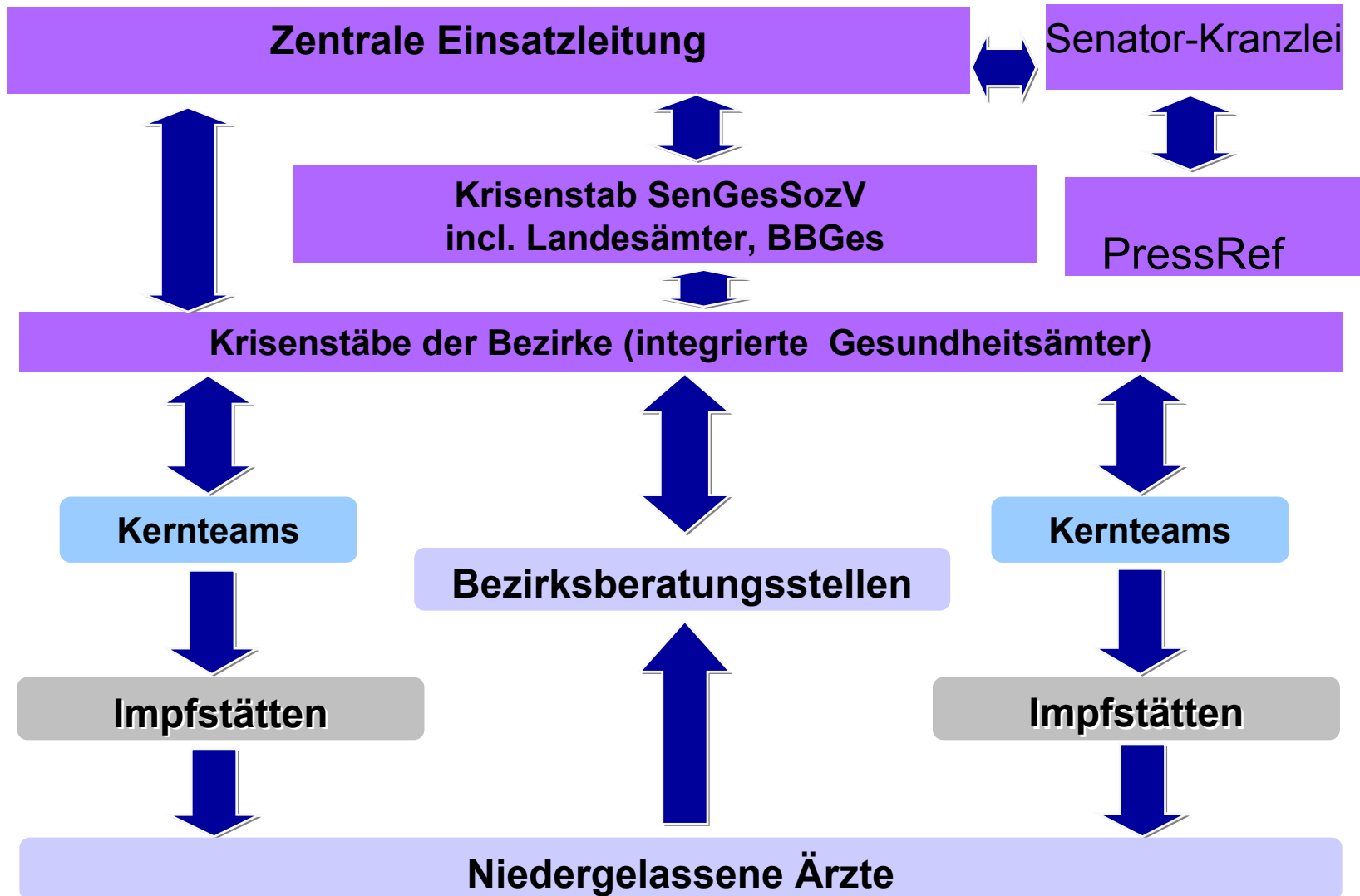


组织结构 – 人员和再培训

Organization – Personnel and training



执行组织机构执行组织机构 Operational organization



天花警报的框架形式是所有在B-局势下
紧急救援计划的基础



All emergency response plans for
biological threats are based on the
framework plan for a smallpox alert.